



wakaama
Outrigger / Va'a / New Zealand

Presenting The 5th Annual Cathedral Cove Challenge

17 & 18 October 2020



25km W6

16km W1 & W2/11km W6

Hosted by: Whitianga Waka Ama Inc

Venue: Buffalo Beach Reserve, Whitianga

25km/16km/11km W6, W2 & W1

Hosted by: Whitianga Waka Ama Inc

Venue: Buffalo Beach Reserve, Whitianga

Day 1 - Saturday 17 October, 2020

Divisions:

25km - W6 - Men, Women, Mixed

\$390 per team, Earlybird price for entries received and paid for by 25 September 2020

\$360 per team (includes race entry, entry to evening prize giving and a sit down meal for each paddler)

Day 1 Prizegiving - Saturday 17 October, 2020

Time: 5.30pm @ the Whitianga Bowling Club

You must be present at the prize giving to claim spot prizes.

Trophies and spot prizes from our generous sponsors will be awarded on the night.

Included: Team entry fee into the 25km race includes tickets for paddlers to the prize giving and dinner on Saturday night. There will be a bar onsite, open from 5.00pm.

Prize Giving Dinner: Additional tickets may be able to be purchased for \$25 per person depending on numbers. For catering purposes please advise of any special dietary requirements prior to Monday 12 October. Inquiries to wakawhiti@gmail.com

Please note: Tickets to the prize giving dinner on Saturday night are not included with the entry costs of the 16km and 11km Sunday races.

Day 2 - Sunday 18 October, 2020

Divisions:

16km - W1/W2 – Men, Women, Mixed

\$30 per paddler, Earlybird price for entries received and paid for by 25 September 2020 \$25 per paddler

11km – W6 - Junior \$120 per team.

Novice \$180 per team.

Day 2 Prize Giving - Sunday 18 October, 2020

Time: After finish of last race @ Buffalo Beach Reserve

You must be present at the prize giving to claim spot prizes

Trophies, certificates and spot prizes from our generous sponsors will be awarded on the beach at the conclusion of the final race.

**Event Schedule:
Saturday, 17 October, 2020**

9:00am Registration
9:45am Karakia
10:00am Race 1 briefing - W6 Women & Mixed
10:30am Race 1 start
1:00pm Race 2 briefing - W6 Men
1:30pm Race 2 start
5.00pm Prize giving venue open
5.30pm Prize giving and dinner

**Event Schedule:
Sunday, 18 October, 2020**

8:15am Registration
8:55am Karakia
9:00am Race 3 briefing - W6 Junior/Novice
9:30am Race 3 start
11:00am Race 4 briefing - W1 / W2
11:30pm Race 4 start
1:30pm Prize giving

How to enter

Your club Rep must enter you on the Waka Ama website:

<http://www.wakaama.co.nz/racecalendar/lookup/1672>

Contact: wakawhiti@gmail.com

Once entry is in please make payment to:

Whitianga Waka Ama Inc 02 0496 0127653 000
--

Please use your team name, race number and division as a reference.

Extra Information

Soup etc will be made available to all paddlers after their event.

There will be a number of spot prizes drawn at both prizegiving's. Paddlers must be in attendance to qualify for spot prizes.

Trophies will be awarded and all divisions will receive certificates for placing 1st, 2nd or 3rd.

Follow us on Facebook for event updates:

<https://www.facebook.com/CathedralCoveChallenge/>

Course Information

- 25km Race Course - W6 Women / Men / Mixed

Course chart: Note course may be altered and/or shortened if conditions require.



Compulsory Equipment:

The following equipment must be carried by all waka and will be checked at gear check

- 1 life jacket/PFD per paddler (must fit correctly)
- 2 bailers
- 2 Spare paddle
- 25m Tow rope
- Spray skirts are compulsory

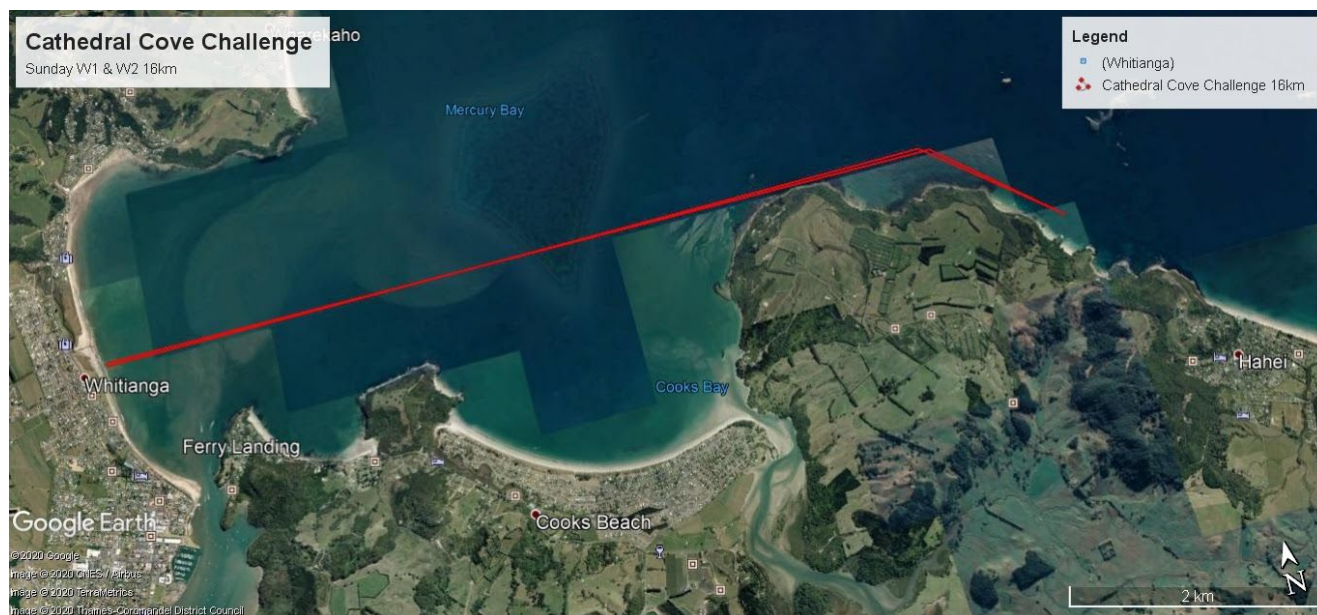
And at least one of the following items:

- Cell phone in waterproof bag
- VHF Radio
- Daytime distress flare

Course Information

- 16km Race Course - W1 & W2

Course chart: Note course may be altered and/or shortened if conditions require.



Compulsory Equipment:

The following equipment must be carried by all waka and will be checked at gear check

- 1 life jacket/PFD per paddler (must fit correctly)
- 1 bailer (unless self draining)
- leg leash for sit on top W1
- 1 spare paddle W1,W2
- high visibility item (i.e hat/shirt)

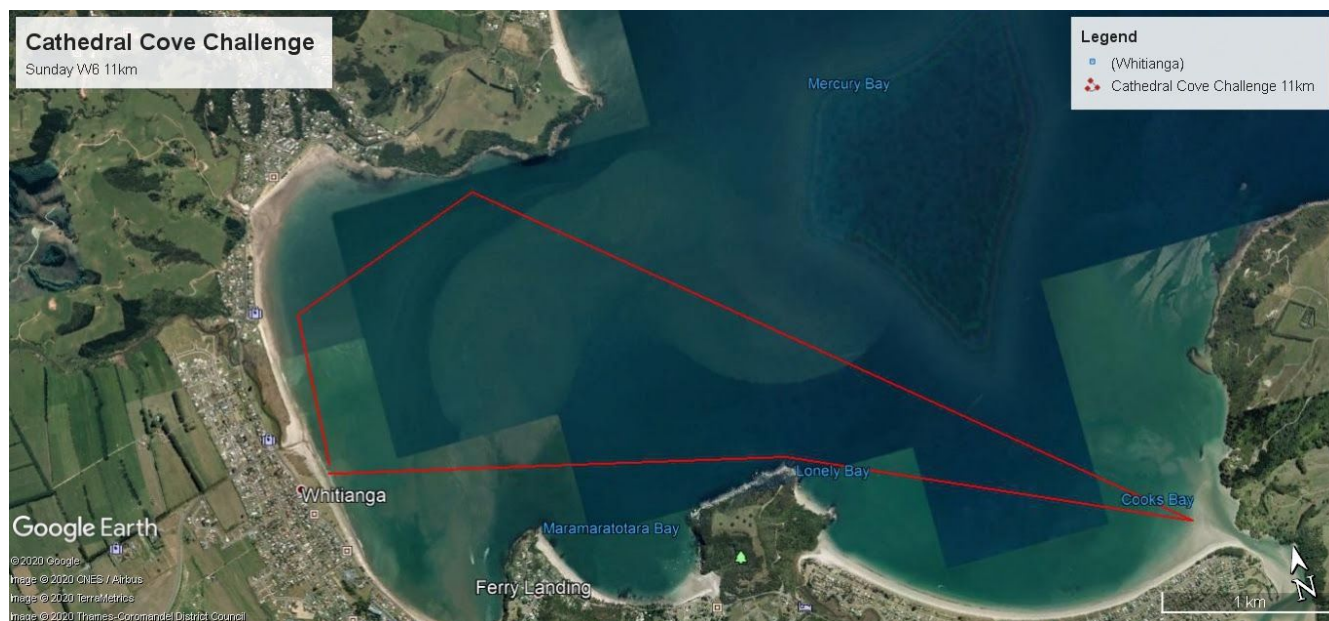
And at least one of the following items:

- Cell phone in waterproof bag
- VHF Radio
- Daytime distress flare

Course Information

- 11km Race - W6 Junior/Novice

Course chart: Note course may be altered and/or shortened if conditions require.



Compulsory Equipment W6:

The following equipment must be carried by all waka and will be checked at gear check

- 1 life jacket/PFD per paddler (must fit correctly)
- 2 bailers
- 2 Spare paddles
- 25m Tow rope
- Spray skirts are compulsory

And at least one of the items below

- Cell phone in waterproof bag
- VHF Radio
- Daytime distress flare